



## 2019 Bond Facts

The bond proposal was developed by the Bearcat Growth Committee. These 38 community members, who are led by two community member co-chairs, met over a seven-month period evaluating and analyzing projected student growth, facility issues, finances, project costs, and the District's instructional focus.

**Middle School #2**  
**\$62,501,000**

- Grade-level (6,7,8) academic wings
- Located on Old Weatherford Rd
- 1,200 student capacity
- Opens Fall 2022



**Aledo Middle School Renovation/Expansion**  
**\$33,446,000**

- Grade-level (6,7,8) academic wings
- New library, fine arts wing, cafeteria space, field house
- 1,200 student capacity
- Opens Fall 2022



**Elementary #6**  
**\$35,858,000**

- Grade-level academic wings
- Located on FM 5 in Annetta
- 800 student capacity
- Opens Fall 2021



**McAnally Intermediate Renovation to Elementary School**

- Grade-level academic wings
- Additional classrooms
- 800 student capacity
- Opens Fall 2022



**\$9,611,000**

**Vandagriff Elementary Renovation to Early Childhood Campus**

- Pre-K
- Preschool Program for Children with Disabilities
- Daycare for Aledo ISD employees
- Opens Fall 2022

**\$1,709,000**



**Coder, Stuard & McCall Elementary Classroom Furniture Replacement**

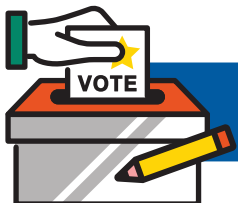
**\$1,800,000**

Supports collaborative learning and AISD's instructional focus



**Land for Future School Sites \$4,525,000 & School Buses \$500,000**

**TOTAL:**  
**\$149,950,000**



**YOU get to decide, but only if YOU VOTE.**

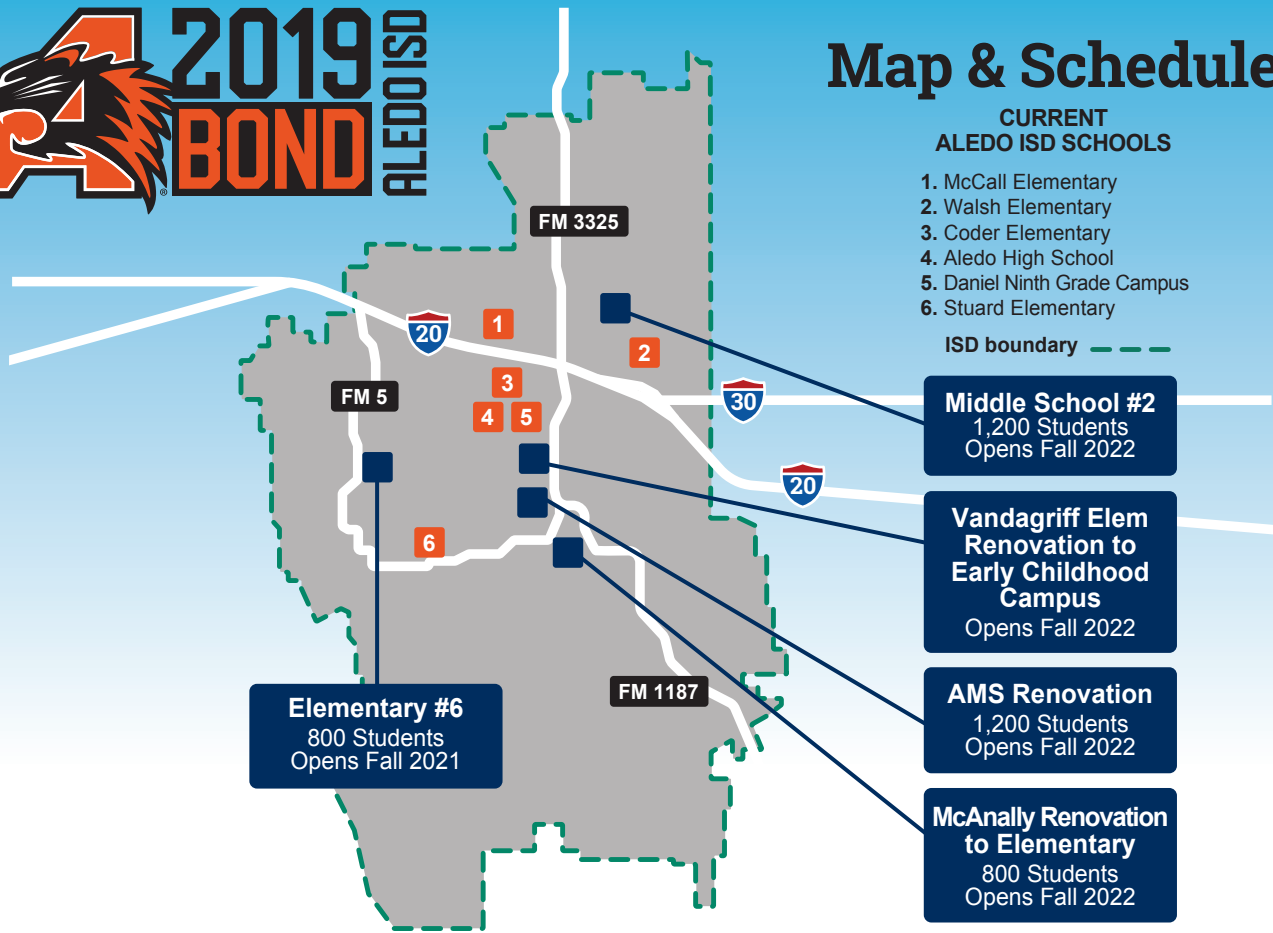


# Map & Schedule

## CURRENT ALEDO ISD SCHOOLS

1. McCall Elementary
2. Walsh Elementary
3. Coder Elementary
4. Aledo High School
5. Daniel Ninth Grade Campus
6. Stuard Elementary

ISD boundary - - - - -



**Elementary #6**  
800 Students  
Opens Fall 2021

**Middle School #2**  
1,200 Students  
Opens Fall 2022

**Vandagriff Elem  
Renovation to  
Early Childhood  
Campus**  
Opens Fall 2022

**AMS Renovation**  
1,200 Students  
Opens Fall 2022

**McAnally Renovation  
to Elementary**  
800 Students  
Opens Fall 2022

## Early Voting 10.21.19 - 11.1.19 | Election Day 11.5.19

### Local Early Voting Sites

**Aledo ISD Administration Building**  
1008 Bailey Ranch Rd.  
Aledo, Texas 76008

**Willow Park Municipal Building**  
516 Ranch House Rd.  
Willow Park, Texas 76087

**Parker County Courthouse Annex**  
1112 Santa Fe Dr.  
Weatherford, Texas 76086

### Voting Hours and Days

**Monday - Friday, October 21 - 25**  
8 a.m. to 5 p.m.

**Saturday, October 26**  
7 a.m. to 7 p.m.

**Sunday, October 27**  
11 a.m. to 4 p.m.

**Monday - Friday, October 28 - November 1**  
7 a.m. to 7 p.m.

## Election Day - Tuesday, Nov. 5

Visit [aledoisdbond.org](http://aledoisdbond.org) for all voting information



[aledoisdbond.org](http://aledoisdbond.org)